

**Gate, Globe & Check Valve  
Forged Steel, Bolted / Welded Bonnet  
Socket weld ends**



**Type GTF**



**Type GLF**



**Type PCF**

**1/2" - 2" (15-50)**

**Class 800, 1500, 2500**

**Design Accordance with API 602 & ASME B 16.34**

## Applications

- General Industry, power stations, process engineering
- For water, steam, gas, oil and other non-aggressive media
- Further applications on request

## Operating data

- Pressure range upto 431 Bar/6250 PSI
- Temperature range up to +593°C/1100°F
- Minimum temperature 0°C (less than 0°C on request)
- Pressure temperature rating as per ASME B 16.34, Standard class

## Materials

- ASTM A 105 from 0°C to 425°C
- ASTM A 182 316L from 0°C to 450°C
- ASTM A 182 F22 from 0°C to 593°C

## Design

- As per API 602 # 800 & # 1500 Valves
- As per ASME B 16.34 # 2500 Valves
- Bolted Bonnet Construction for # 800 Valves
- Welded Bonnet Construction for # 1500 & # 2500 Valves
- Hard faced Seats (13% Cr / Stellite)
- Encapsulated gasket for #800 Valves
- The Valves meet the safety requirement of the Pressure Equipment Directive 97/23/EC(PED) of annex I for fluids of the groups 1 and 2.

## Variants on request

- Locking arrangement
- Flanged Ends to # 150/300/600
- Threaded / Butt Weld connections
- Position indicator
- Other Material of construction

## Remarks :

(Type Series Booklet References)

SICCA 900-2500 GTC	: 7241.2/01-14
SICCA 900-2500 GLC	: 7242.2/01-14
SICCA 900-2500 SCC	: 7243.2/01-14
SICCA 150-600 GTC	: 7244.2/01-14
SICCA 150-600 GLC	: 7245.2/01-14
SICCA 150-600 SCC	: 7246.2/01-14
Operating instructions no.	: 0500.80/06 - 18 G3

## On all enquiries / orders please specify :

1. Type
2. ASME pressure class
3. Size
4. Design pressure
5. Operating pressure
6. Operating temperature
7. Differential pressure
8. Material of construction
9. Flow medium
10. Flow rate Min. / Max.
11. Type of end connection
12. Variants
13. Type Series Booklet no.
14. Valve data sheet (if applicable)

When ordering spares, Indicate Serial number of Valve.

### Pressure Temperature Chart

**MATERIAL : A 105 Standard Class**

**NOTE : Permissible, but not recommended for prolonged usage above about 800°F**

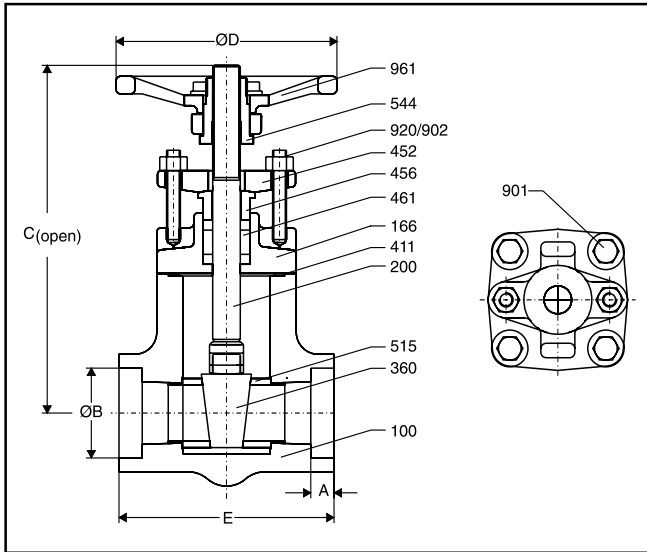
Temperature		Pressure class											
		# 150		# 300		# 600		# 800*		# 1500		# 2500	
		PSI	Kg/cm <sup>2</sup>	PSI	Kg/cm <sup>2</sup>	PSI	Kg/cm <sup>2</sup>	PSI	Kg/cm <sup>2</sup>	PSI	Kg/cm <sup>2</sup>	PSI	Kg/cm <sup>2</sup>
-20 to 100	-29 to 38	285	20.0	740	52.0	1480	104.1	1975	138.9	3705	260.5	6170	433.8
200	93.3	260	18.3	680	47.8	1360	95.6	1810	127.3	3395	238.7	5655	397.6
300	148.9	230	16.2	655	46.1	1310	92.1	1745	122.7	3270	229.9	5450	383.2
400	204.4	200	14.1	635	44.6	1265	88.9	1690	118.8	3170	222.9	5280	371.2
500	260.0	170	12.0	605	42.5	1205	84.7	1610	113.2	3015	212.0	5025	353.3
600	315.6	140	9.8	570	40.1	1135	79.8	1515	106.5	2840	199.7	4730	332.6
650	343.3	125	8.8	550	38.7	1100	77.3	1465	103.0	2745	193.0	4575	321.7
700	371.1	110	7.7	530	37.3	1060	74.5	1415	99.5	2665	187.4	4425	311.1
750	398.9	95	6.7	505	35.5	1015	71.4	1350	94.9	2535	178.2	4230	297.4
800	426.7	80	5.6	410	28.8	825	58.0	1100	77.3	2055	144.5	3430	241.2
850	454.4	65	4.6	320	22.5	640	45.0	850	59.8	1595	112.1	2655	186.7
900	482.2	50	3.5	230	16.2	460	32.3	615	43.2	1150	80.9	1915	134.6
950	510.0	35	2.5	135	9.5	275	19.3	365	25.7	685	48.2	1145	80.5
1000	537.8	20	1.4	85	6.0	170	12.0	225	15.8	430	30.2	715	50.3

**MATERIAL : A 182 F22 Standard Class**

**NOTE : Use normalised and tempered material only**

Temperature		Pressure class											
		# 150		# 300		# 600		# 800*		# 1500		# 2500	
		PSI	Kg/cm <sup>2</sup>	PSI	Kg/cm <sup>2</sup>	PSI	Kg/cm <sup>2</sup>	PSI	Kg/cm <sup>2</sup>	PSI	Kg/cm <sup>2</sup>	PSI	Kg/cm <sup>2</sup>
-20 to 100	-29 to 38	290	20.4	750	52.7	1500	105.5	2000	140.6	3750	263.7	6250	439.4
200	93.3	260	18.3	750	52.7	1500	105.5	2000	140.6	3750	263.7	6250	439.4
300	148.9	230	16.2	730	51.3	1455	102.3	1940	136.4	3640	255.9	6070	426.8
400	204.4	200	14.1	705	49.6	1410	99.1	1880	132.2	3530	248.2	5880	413.4
500	260.0	170	12.0	665	46.8	1330	93.5	1775	124.8	3325	233.8	5540	389.5
600	315.6	140	9.8	605	42.5	1210	85.1	1615	113.5	3025	212.7	5040	354.3
650	343.3	125	8.8	590	41.5	1175	82.6	1570	110.4	2940	206.7	4905	344.9
700	371.1	110	7.7	570	40.1	1135	79.8	1515	106.5	2840	199.7	4730	332.6
750	398.9	95	6.7	530	37.3	1065	74.9	1420	99.8	2660	187.0	4430	311.5
800	426.7	80	5.6	510	35.9	1015	71.4	1355	95.3	2540	178.6	4230	297.4
850	454.4	65	4.6	485	34.1	975	68.5	1300	91.4	2435	171.2	4060	285.4
900	482.2	50	3.5	450	31.6	900	63.3	1200	84.4	2245	157.8	3745	263.3
950	510.0	35	2.5	385	27.1	755	53.1	1025	72.1	1930	135.7	3220	226.4
1000	537.8	20	1.4	265	18.6	535	37.6	710	49.9	1335	93.9	2230	156.8
1050	565.6	20	1.4	175	12.3	350	24.6	465	32.7	875	61.5	1455	102.3
1100	593.3	20	1.4	110	7.7	220	15.5	295	20.7	550	38.7	915	64.3
1150	621.1	20	1.4	70	4.9	135	9.5	180	12.7	345	24.3	570	40.1
1200	648.9	15	1.1	40	2.8	80	5.6	110	7.7	205	14.4	345	24.3

\* Pressure/Temperature Class Values as per API 602

**# 800 GATE VALVE**

**A. DESIGN / TEST SPECIFICATION**

TEST (API 598)	(kg/cm <sup>2</sup> )	(PSI)	TESTING MEDIUM
SHELL	212	2975	WATER
BACK SEAT	155	2175	
SEAT LEAK	4 TO 7	58 TO 100	AIR
<b>DESIGN SPECIFICATIONS</b>			
GENERAL VALVE DESIGN & PR. TEMP. RATING			API 602
SOCKET WELD END DIMENSIONS			ASME B16.11
END TO END AS PER MANUFACTURER'S STANDARD			

SS316L - SHELL : 189 Kg/cm<sup>2</sup> / 2400 PSI  
 BACK SEAT : 139 Kg/cm<sup>2</sup> / 1775 PSI

**B. DIMENSIONS**

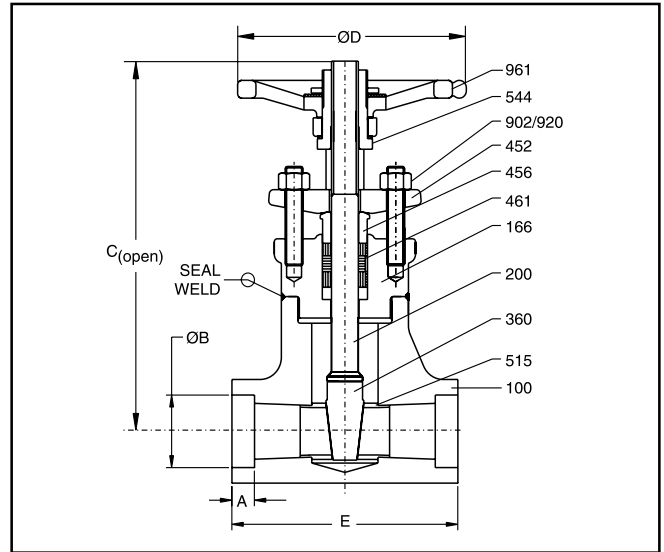
SIZE		E		ØB		C (open)		ØD		A	
INCH	MM	INCH	MM	INCH	MM	INCH	MM	INCH	MM	INCH	MM
1/2	15	2.9	73	0.9	21.8	5.0	140	3.7	96	0.4	9.5
3/4	20	3.2	82	1.1	27.2	5.4	155	3.7	96	0.5	12.5
1	25	3.5	90	1.3	33.9	5.9	170	4.1	103	0.5	12.5
1½	40	5.0	127	1.9	48.8	8.1	240	5.0	127	0.5	12.5
2	50	5.8	148	2.4	61.2	9.5	285	5.8	150	0.6	16.0

**C. MATERIAL**

PART NO.	PART NAME	MATERIALS AS PER ASTM	
100	BODY	A 105	A 182-F316L
166	BONNET	A 105	A 182-F316L
200	STEM	A 479-410-2	A 276-316L
360	WEDGE	A 217-CA15/ A 217-CA15+ST6 <sup>1)</sup>	A 351-CF3M
411	GASKET	SS + GRPH	SS+GRPH
452	GLAND FLANGE	A 105	A 182-F316L
456	GLAND BUSH	A 276-410	A 276-316L
461	GLAND PACKING	GRAPHITE	GRAPHITE
515	SEAT RING	A 276-410(H) <sup>2)</sup> / A 276-410+ST6	A 276-316L
544	STEM NUT	A 582-416	A 582-416
901	HEX BOLT	A 193-B7	A 193-B8M
902	STUD	A 193-B6	A 193-B8M
920	HEX NUT	A 194-2H	A 194-B8
961	HAND WHEEL	IS 2108-BM 340 / SG IRON	

1) A 217-CA15+ST6 for trim 5 only

2) A 276-410(H) for trim 1 only

**# 1500 GATE VALVE**

**A. DESIGN / TEST SPECIFICATION**

TEST (API 598)	(kg/cm <sup>2</sup> )	(PSI)	TESTING MEDIUM
SHELL	396	5625	WATER
BACK SEAT	291	4125	
SEAT LEAK	4 TO 7	58 TO 100	AIR
<b>DESIGN SPECIFICATIONS</b>			
GENERAL VALVE DESIGN			API 602
PRESSURE TEMPERATURE RATINGS			ASME B16.34
SOCKET WELD END DIMENSIONS			ASME B16.11
END TO END AS PER MANUFACTURER'S STANDARD			

**B. DIMENSIONS**

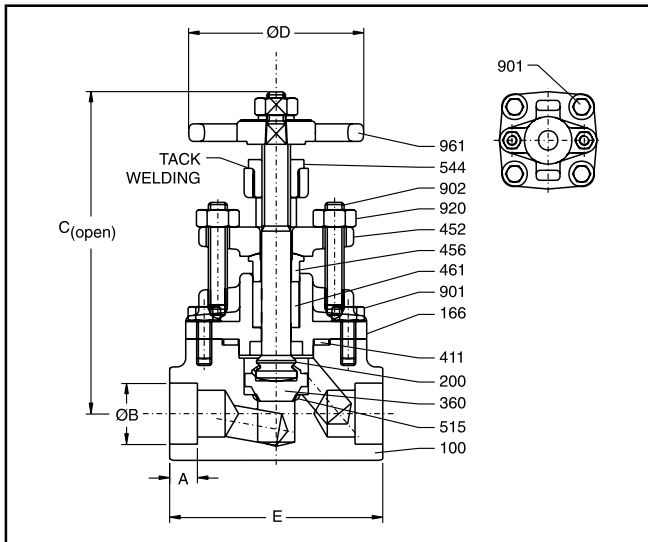
SIZE		E		ØB		C (open)		ØD		A	
INCH	MM	INCH	MM	INCH	MM	INCH	MM	INCH	MM	INCH	MM
1/2	15	2.9	73	0.9	21.8	6.1	170	3.7	96	0.4	9.5
3/4	20	3.7	94	1.1	27.2	6.5	190	3.7	96	0.5	12.5
1	25	4.8	122	1.3	33.9	7.5	210	5.0	127	0.5	12.5
1½	40	6.3	160	1.9	48.8	10.1	290	5.8	150	0.5	12.5
2	50	7.0	178	2.4	61.2	10.7	315	5.8	150	0.6	16.0

**C. MATERIAL**

PART NO.	PART NAME	MATERIALS AS PER ASTM	
100	BODY	A 105	A 182-F22
166	BONNET	A 105	A 182-F22
200	STEM	A 479-410-2	A 479-410-2
360	WEDGE	A 217-CA15/ A 217-CA15+ST6 <sup>1)</sup>	A 217-CA15/ A 217-CA15+ST6 <sup>1)</sup>
452	GLAND FLANGE	A 105	A 105
456	GLAND BUSH	A 276-410	A 276-410
461	GLAND PACKING	GRAPHITE	GRAPHITE
515	SEAT RING	A 276-410(H) <sup>2)</sup> / A 276-410+ST6	A 276-410(H) <sup>2)</sup> / A 276-410+ST6
544	STEM NUT	A 582-416	A 582-416
902	STUD	A 193-B8M Cl. 2	A 193-B8M Cl. 2
920	HEX NUT	A 194-2H	A 194-2H
961	HAND WHEEL	IS 2108-BM 340 / SG IRON	

1) A 217-CA15+ST6 for trim 5 only

2) A 276-410(H) for trim 1 only

**# 800 GLOBE VALVE**

**A. DESIGN / TEST SPECIFICATIONS**

TEST (API 598)	(kg/cm <sup>2</sup> )	(PSI)	TESTING MEDIUM
SHELL	212	2975	WATER
BACK SEAT	155	2175	
SEAT LEAK	155	2175	
<b>DESIGN SPECIFICATIONS</b>			
GENERAL VALVE DESIGN & PR. TEMP. RATING			API 602
SOCKET WELD END DIMENSIONS			ASME B16.11
END TO END AS PER MANUFACTURER'S STANDARD			

SS316L - SHELL : 189 Kg/cm<sup>2</sup> / 2400 PSI  
SEAT / BACK SEAT : 139 Kg/cm<sup>2</sup> / 1775 PSI

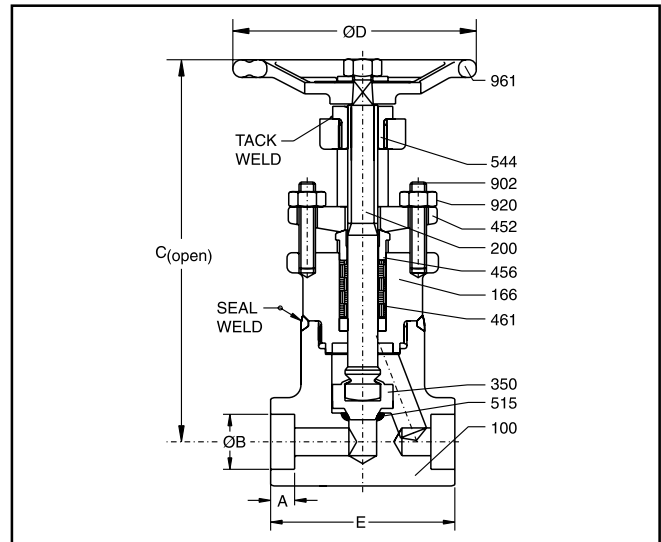
**B. DIMENSIONS**

SIZE		E		ØB		C(open)		ØD		A	
INCH	MM	INCH	MM	INCH	MM	INCH	MM	INCH	MM	INCH	MM
1/2	15	2.9	73	0.9	21.8	4.7	125	3.0	75	0.4	9.5
3/4	20	3.2	82	1.1	27.2	5.2	142	3.0	75	0.5	12.5
1	25	4.3	108	1.3	33.9	5.8	180	4.7	120	0.5	12.5
1½	40	6.0	152	1.9	48.8	8.0	220	5.7	144	0.5	12.5
2	50	5.8	148	2.4	61.2	10.4	285	5.7	144	0.6	16.0

**C. MATERIAL**

PART NO.	PART NAME	MATERIALS AS PER ASTM	
100	BODY	A 105	A 182-F316L
166	BONNET	A 105	A 182-F316L
200	STEM	A 479-410-2	A 276-316L
360	DISC	A 276-410 (H) / A 276-304+ST6 <sup>1)</sup>	A276-316L
411	GASKET	SS + GRPH	SS+GRPH
452	GLAND FLANGE	A 105	A 182-F316L
456	GLAND BUSH	A 276-410	A 276-316L
461	GLAND PACKING	GRAPHITE	GRAPHITE
515	SEAT	ST6 (INTEGRAL)	INTEGRAL
544	STEM NUT	A 582-416	A 582-416
901	HEX BOLT	A 193-B7	A 193-B8M
902	STUD	A 193-B6	A 193-B8M
920	HEX NUT	A 194-2H	A 194-B8
961	HAND WHEEL	IS 2108-BM 340 / SG IRON	

1) A 276-304+ST6 for trim 5 only

**# 1500 GLOBE VALVE**

**A. DESIGN / TEST SPECIFICATIONS**

TEST (API 598)	(kg/cm <sup>2</sup> )	(PSI)	TESTING MEDIUM
SHELL	396	5625	WATER
BACK SEAT	291	4125	
SEAT LEAK	291	4125	
<b>DESIGN SPECIFICATIONS</b>			
GENERAL VALVE DESIGN			API 602
PPRESSURE TEMPERATURE RATINGS			ASME B16.34
SOCKET WELD END DIMENSIONS			ASME B16.11
END TO END AS PER MANUFACTURER'S STANDARD			

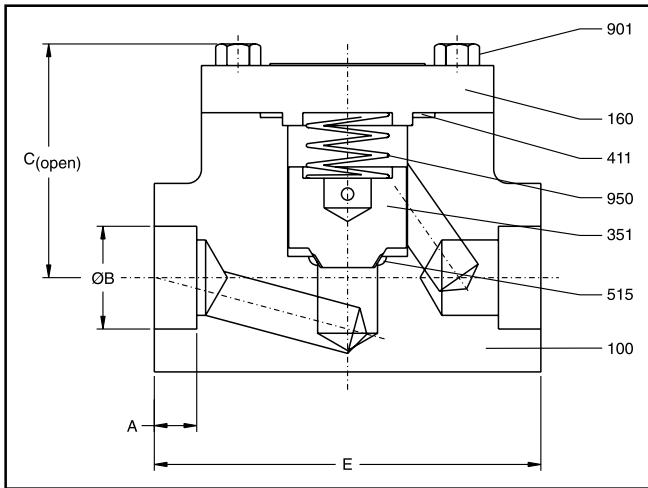
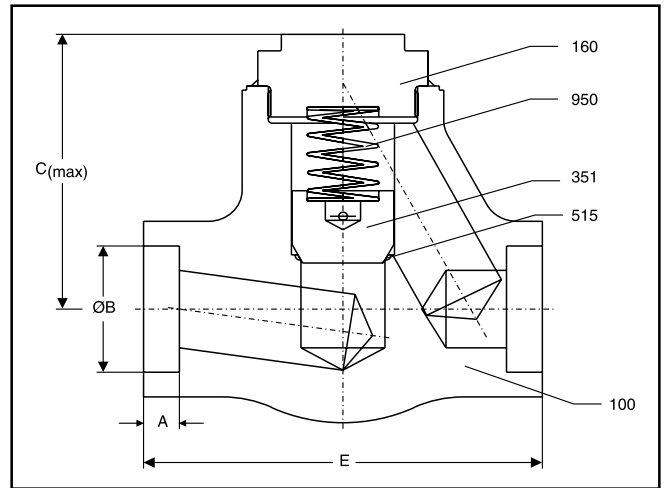
**B. DIMENSIONS**

SIZE		E		ØB		C(open)		ØD		A	
INCH	MM	INCH	MM	INCH	MM	INCH	MM	INCH	MM	INCH	MM
1/2	15	2.9	73	0.9	21.8	6.7	180	5.0	127	0.4	9.5
3/4	20	3.7	94	1.1	27.2	8.7	230	7.3	145	0.5	12.5
1	25	4.8	122	1.3	33.9	9.3	250	7.3	145	0.5	12.5
1½	40	6.3	160	1.9	48.8	11.6	315	8.0	203	0.5	12.5
2	50	7.0	178	2.4	61.2	12.2	335	8.0	203	0.6	16.0

**C. MATERIAL**

PART NO.	PART NAME	MATERIALS AS PER ASTM	
100	BODY	A 105	A 182-F22
166	BONNET	A 105	A 182-F22
200	STEM	A 479-410-2	A 479-410-2
350	DISC	A 276-410 (H) / A 276-304+ST6 <sup>1)</sup>	A 276-410 (H) / A 276-304+ST6 <sup>1)</sup>
452	GLAND FLANGE	A 105	A 105
456	GLAND BUSH	A 276-410	A 276-410
461	GLAND PACKING	GRAPHITE	GRAPHITE
515	SEAT	ST6 (INTEGRAL)	ST6 (INTEGRAL)
544	STEM NUT	A 582-416	A 582-416
902	STUD	A 193-B8M Cl. 2	A 193-B8M Cl. 2
920	HEX NUT	A 194-2H	A 194-2H
961	HAND WHEEL	IS 2108-BM 340 / SG IRON	

1) A 276-304+ST6 for trim 5 only

**# 800 CHECK VALVE**

**# 1500 CHECK VALVE**

**A. DESIGN / TEST SPECIFICATIONS**

TEST (API 598)	(kg/cm <sup>2</sup> )	(PSI)	TESTING MEDIUM
SHELL	212	2975	WATER
SEAT LEAK	155	2175	
<b>DESIGN SPECIFICATIONS</b>			
GENERAL VALVE DESIGN & PR. TEMP. RATING			API 602
SOCKET WELD END DIMENSIONS			ASME B16.11
END TO END AS PER MANUFACTURER'S STANDARD			

SS316L - SHELL : 189 Kg/cm<sup>2</sup> / 2400 PSI  
SEAT : 139 Kg/cm<sup>2</sup> / 1775 PSI

**B. DIMENSIONS**

SIZE		E		ØB		C(open)		A	
INCH	MM	INCH	MM	INCH	MM	INCH	MM	INCH	MM
1/2	15	2.9	73	0.9	21.8	2.0	50	0.4	9.5
3/4	20	3.2	82	1.1	27.2	2.4	60	0.5	12.5
1	25	4.3	108	1.3	33.9	2.6	65	0.5	12.5
1½	40	6.0	152	1.9	48.8	3.5	90	0.5	12.5
2	50	5.8	148	2.4	61.2	4.9	125	0.6	16.0

**C. MATERIAL**

PART NO.	PART NAME	MATERIALS AS PER ASTM	
100	BODY	A 105	A 182-316L
160	COVER	A 105	A 182-316L
351	DISC	A 276-410 (H) / A 276-304+ST6 <sup>1)</sup>	A276-316L
411	GASKET	SS + GRPH	SS+GRPH
515	SEAT	ST6 (INTEGRAL)	INTEGRAL
901	HEX BOLT	A 193-B7	A 193-B8M Cl. 2
950	SPRING	A 313-SS 302	SS 304

**A. DESIGN / TEST SPECIFICATIONS**

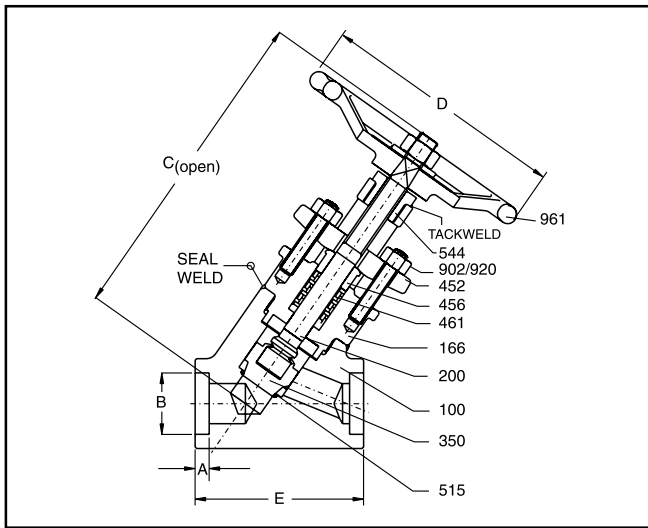
TEST (API 598)	(kg/cm <sup>2</sup> )	(PSI)	TESTING MEDIUM
SHELL	396	5625	WATER
SEAT LEAK	291	4125	
<b>DESIGN SPECIFICATIONS</b>			
GENERAL VALVE DESIGN			API 602
PRESSURE TEMPERATURE RATINGS			ASME B16.34
SOCKET WELD END DIMENSIONS			ASME B16.11
END TO END AS PER MANUFACTURER'S STANDARD			

**B. DIMENSIONS**

SIZE		E		ØB		C		A	
INCH	MM	INCH	MM	INCH	MM	INCH	MM	INCH	MM
1/2	15	2.9	73	0.9	21.8	2.6	65	0.4	9.5
3/4	20	3.7	94	1.1	27.2	3.1	80	0.5	12.5
1	25	4.8	122	1.3	33.9	3.7	95	0.5	12.5
1½	40	6.3	160	1.9	48.8	4.7	120	0.5	12.5
2	50	7.0	178	2.4	61.2	5.5	140	0.6	16.0

**C. MATERIAL**

PART NO.	PART NAME	MATERIALS AS PER ASTM	
100	BODY	A 105	A 182-F22
160	COVER	A 105	A 182-F22
351	DISC	A 276-410 (H) / A 276-304+ST6 <sup>1)</sup>	A 276-410 (H) / A 276-304+ST6 <sup>1)</sup>
515	SEAT	ST6 (INTEGRAL)	ST6 (INTEGRAL)
950	SPRING	A 313-SS 302	A 313-SS 302

**# 2500 Y - GLOBE**

**A. DESIGN / TEST SPECIFICATIONS**

TEST (API 598)	(kg/cm <sup>2</sup> )	(PSI)	TESTING MEDIUM
SHELL	660	9375	WATER
BACK SEAT	484	6875	
SEAT LEAK	484	6875	
<b>DESIGN SPECIFICATIONS</b>			
GENERAL VALVE DESIGN & PR. TEMP. RATING			ASME B16.34
SOCKET WELD END DIMENSIONS			ASME B16.11
END TO END AS PER MANUFACTURER'S STANDARD			

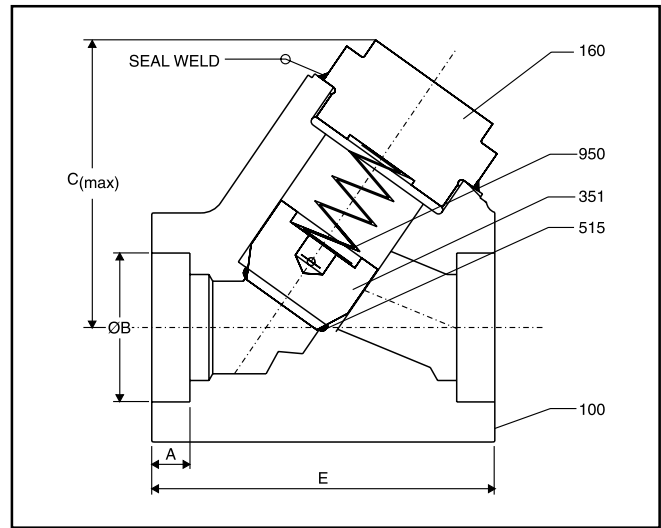
**B. DIMENSIONS**

SIZE		E		ØB		C(open)		ØD		A	
INCH	MM	INCH	MM	INCH	MM	INCH	MM	INCH	MM	INCH	MM
1/2	15	3.3	85	0.9	21.8	7.3	186	5.0	127	0.4	9.5
3/4	20	3.9	98	1.1	27.2	8.7	220	7.3	145	0.5	12.5
1	25	4.1	104	1.3	33.9	9.5	240	7.3	145	0.5	12.5
1½	40	5.7	144	1.9	48.8	11.8	300	8.0	203	0.5	12.5
2	50	5.7	144	2.4	61.2	15.0	380	10.0	255	0.6	16.0

**C. MATERIAL**

PART NO.	PART NAME	MATERIALS AS PER ASTM		
100	BODY	A 105	A 182-F22	A 182 GR F91
166	BONNET	A 105	A 182-F22	A 182 GR F91
200	STEM	A 479-410-2	A 479-410-2	A 479-XM19
350	DISC	A 276-410 (H) / A 276-304+ST6 <sup>1)</sup>	A 276-410 (H) / A 276-304+ST6 <sup>1)</sup>	A 276-410 (H) / A 276-304+ST6 <sup>1)</sup>
452	GLAND FLANGE	A 105	A 105	A 182 GR F22
456	GLAND BUSH	A 276-410	A 276-410	A 276-410
461	GLAND PACKING	GRAPHITE	GRAPHITE	GRAPHITE
515	SEAT	ST6 (INTEGRAL)	ST6 (INTEGRAL)	ST6 (INTEGRAL)
544	STEM NUT	A 582-416	A 582-416	A 582-416
902	STUD	A 193-B8M Cl. 2	A 193-B8M Cl. 2	A 193-B8M Cl. 2
920	HEX NUT	A 194-2H	A 194-2H	A 194-4/7
961	HAND WHEEL	IS 2108-BM 340 / SG IRON		

1) A 276-304+ST6 for trim 5 only

**# 2500 Y - CHECK**

**A. DESIGN / TEST SPECIFICATIONS**

TEST (API 598)	(Kg/cm <sup>2</sup> )	(PSI)	TESTING MEDIUM
SHELL	660	9375	WATER
SEAT LEAK	484	6875	
<b>DESIGN SPECIFICATIONS</b>			
GENERAL VALVE DESIGN & PR. TEMP. RATING			ASME B16.34
SOCKET WELD END DIMENSIONS			ASME B16.11
END TO END AS PER MANUFACTURER'S STANDARD			

**B. DIMENSIONS**

SIZE		E		ØB		C(max)		A	
INCH	MM	INCH	MM	INCH	MM	INCH	MM	INCH	MM
1/2	15	3.4	85	0.9	21.8	3.0	80	0.4	9.5
3/4	20	3.9	98	1.1	27.2	3.0	80	0.5	12.5
1	25	4.1	104	1.3	33.9	3.5	90	0.5	12.5
1½	40	5.7	144	1.9	48.8	4.7	120	0.5	12.5
2	50	5.7	144	2.4	61.2	5.0	130	0.6	16.0

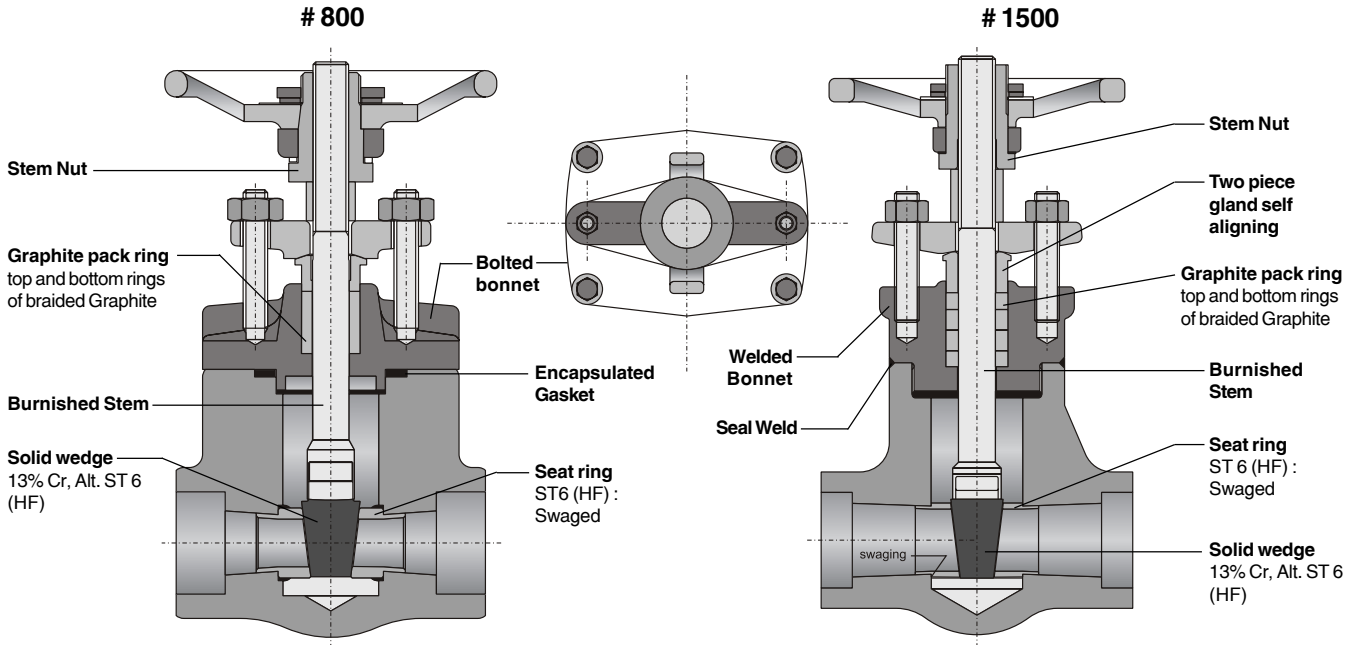
**C. MATERIAL**

PART NO.	PART NAME	MATERIALS AS PER ASTM		
100	BODY	A 105	A 182-F22	A 182 GR F91
160	COVER	A 105	A 182-F22	A 182 GR F91
351	DISC	A 276-410 (H) / A 276-304+ST6 <sup>1)</sup>	A 276-410 (H) / A 276-304+ST6 <sup>1)</sup>	A 276-410 (H) / A 276-304+ST6 <sup>1)</sup>
515	SEAT	ST6 (INTEGRAL)	ST6 (INTEGRAL)	ST6 (INTEGRAL)
950	SPRING	A 313-SS 302	A 313-SS 302	A 313-SS 302

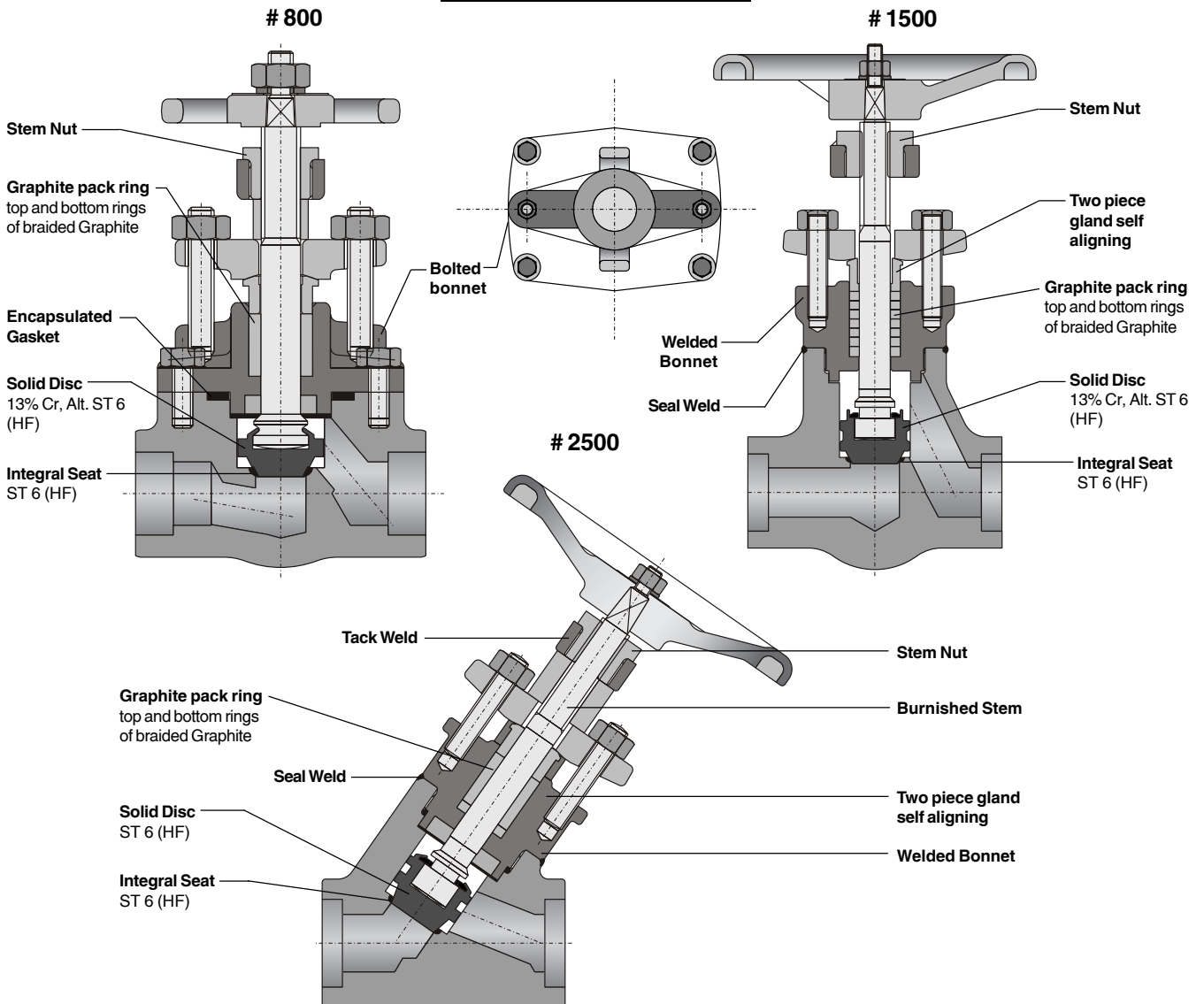
1) A 276-304+ST6 for trim 5 only

Product features to our Customer's benefit

**Gate Valve**



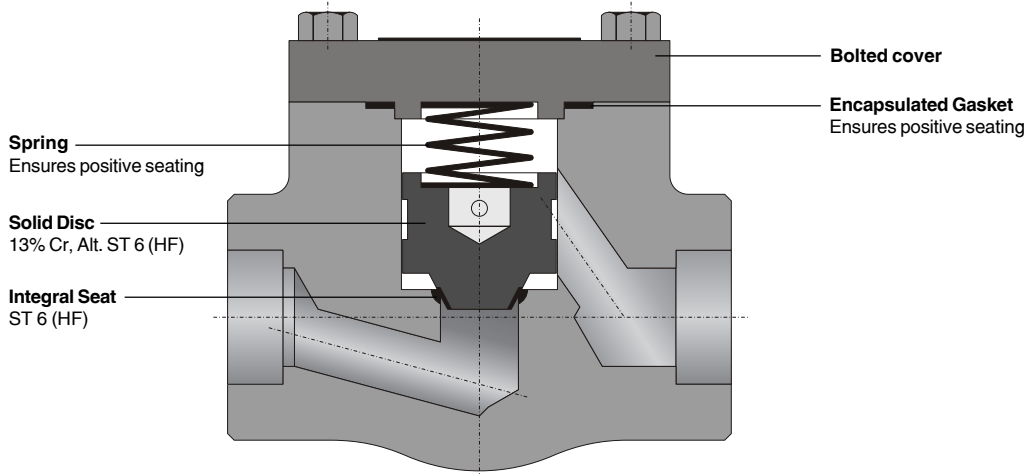
**Globe Valve**



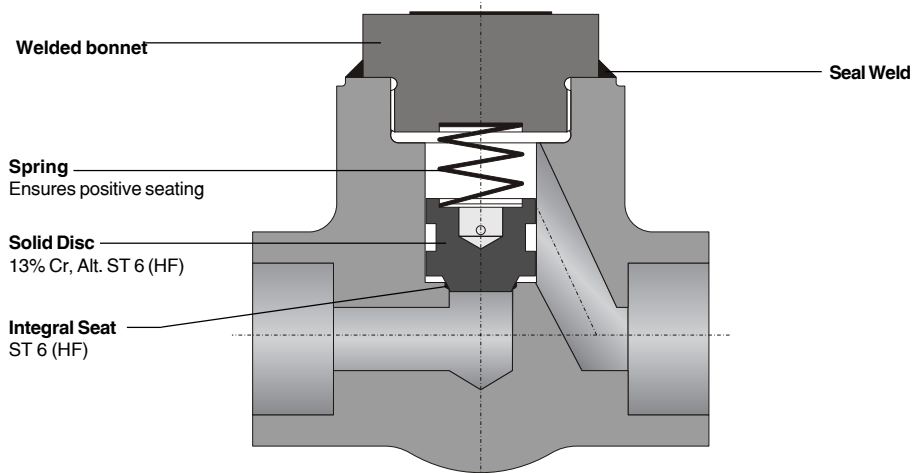
Product features to our Customer's benefit

**Check Valve**

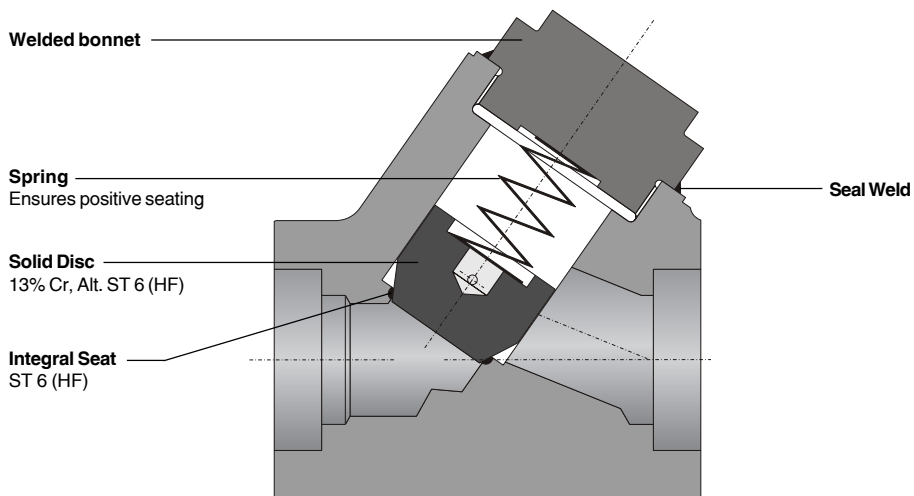
# 800



# 1500



# 2500



Technical matter. Subject to change without notice.



**KSB Pumps Limited**

151, Mettupalayam Road, NSN Palayam Post, Coimbatore - 641 031. India.  
Tel. : +91 422 2468222 Fax : +91 422 2468232 www.ksbindia.co.in